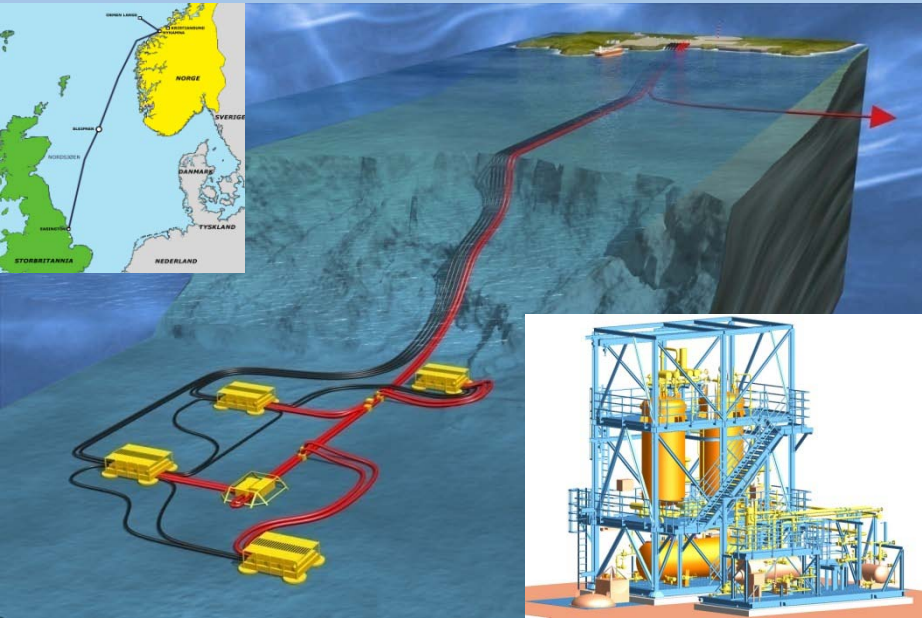


# MPPE for Statoil/Hydro-Shell ORMEN LANGE Gas Produced Water Treatment



- Flow rate 70 m<sup>3</sup>/h
- > 99% removal of BTEX, PAHs, Aliphatics (oil)
- Since January 2008

## MPPE for Removal of:

- Dispersed oil (aliphatics)
- Dissolved and dispersed aromatics (BTEX, PAHs)

## ORMEN LANGE:

- World's most challenging gasfield development project
- Makes Norway world's largest exporter of natural gas
- Largest industrial project ever carried out in Norway
- 100 kilometer from the northwest coast of Norway



**MPP SYSTEMS**

**VWS OIL & GAS**

**VEOLIA**  
WATER

Solutions & Technologies  
[www.vwsmpsystems.com](http://www.vwsmpsystems.com)