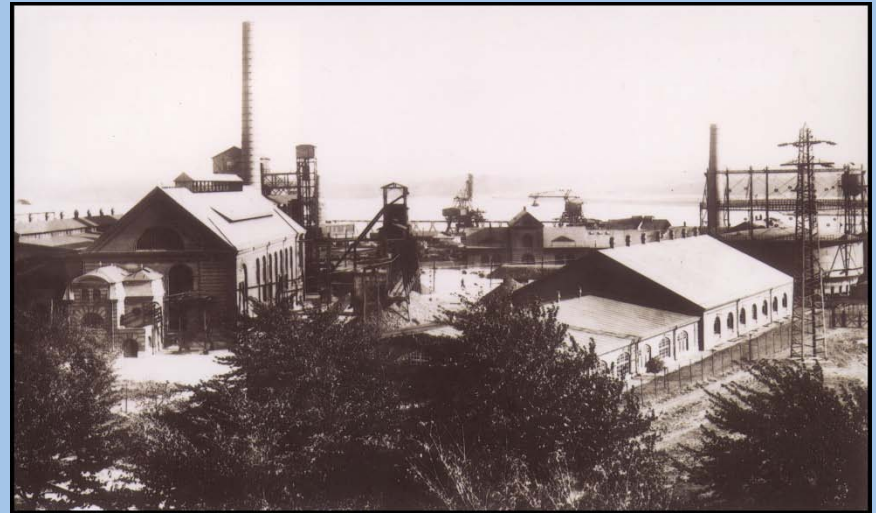


# MPPE System for former city gas locations and coal storage locations



- Since December 1998
- Successfully operated by Stadtwerke Flensburg (Germany)
- MPPE unit in container, total surface 14 m<sup>2</sup>
- Fully automated and remote controlled
- Groundwater treatment
- BTEX reduced from 10,832 µg/l to < 5 µg/l
- PAHs reduced from 3,948 µg/l to < 1 µg/l
- 6 m<sup>3</sup>/h
- Treated water is reinfiltred in the ground

**MPP SYSTEMS**

**VWS OIL & GAS**

**VEOLIA**  
WATER

Solutions & Technologies  
[www.vwsmppsystems.com](http://www.vwsmppsystems.com)